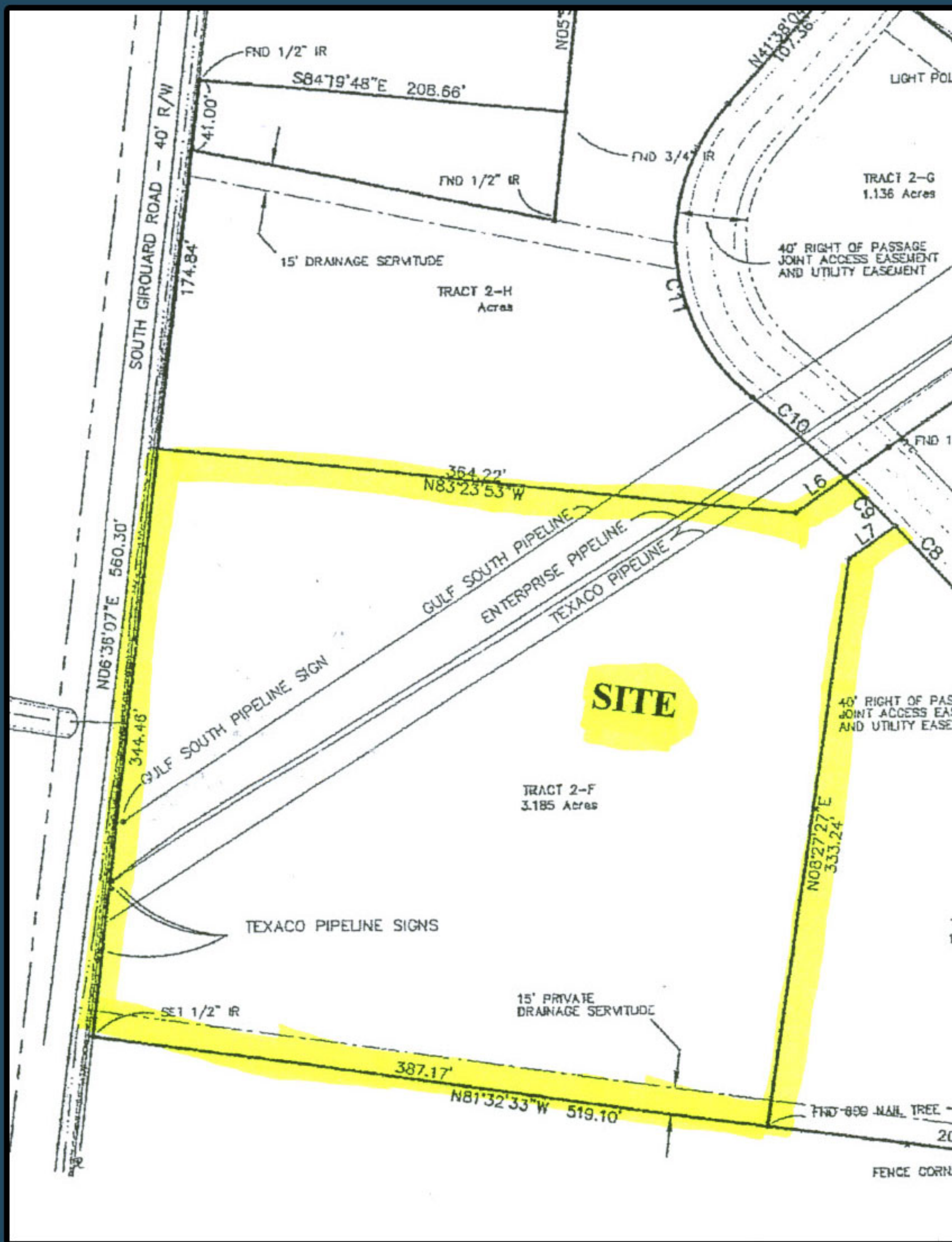
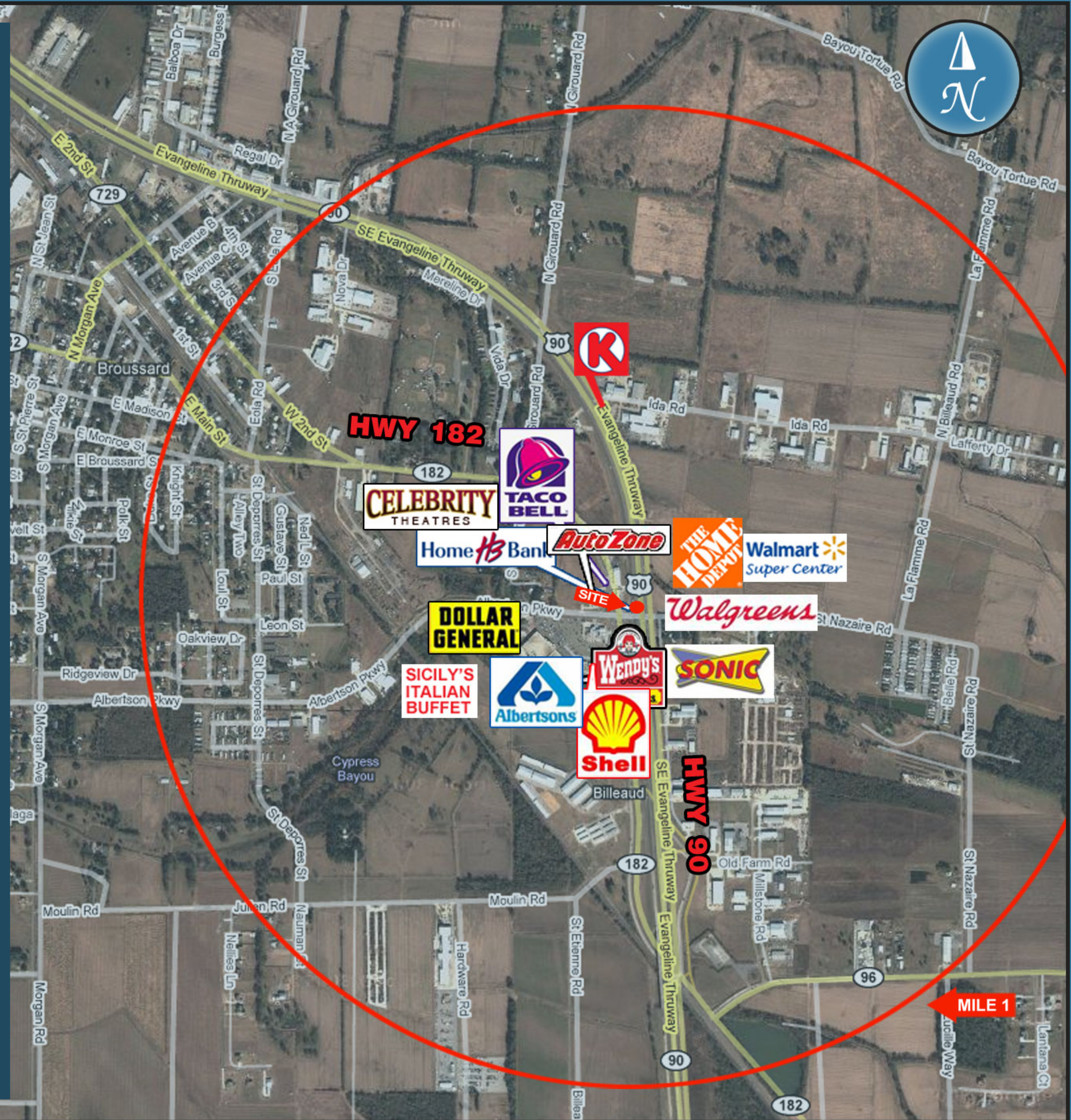


Hwy 182 & Albertson's Pkwy NWQ Hwy 90 (SW Evangeline Thruway) Broussard, LA



■ 2009 Traffic Counts:
 HWY 90 = 40,242
 HWY 182 = 8,617
 Albertsons Pkwy = 20,867



**Hwy 182 & Albertson's Pkwy
NWQ Hwy 90 (SW Evangeline Thruway)
Broussard, LA**

SITE SUMMARY

The city of Broussard, Lafayette Parish, is located south of Lafayette, LA. It is commonly referred to as "Simply The Best Place To Be!" Broussard's demographic growth indicates it is in the path of progress for Lafayette Parish retail and residential expansion.

The site is located on Highway 182 (E. Main Street) near Albertson's Parkway, which is northwest of Highway 90 (SW Evangeline Thruway). It is positioned in the trade area on the west side of Highway 182, where the majority of the new and existing residents and retailers are. The vast residential development, commercial and economic progression has made Broussard an independent trading area. This rapidly developing trade area is home to a large volume of traffic navigating Highway 90 (future I-49) the Gulf Coast perimeter south from I-10 and all points east to Kenner, where it loops back onto I-10 to New Orleans.

The trade area is enhanced by retail generators which surround the site such as, Walmart Super Center, The Home Depot, Celebrity Theatres, Albertson's Grocery, Walgreen's, Raising Cane's, Sonic, Shell, Wendy's Dollar General, Taco Bell, Home Bank, Auto Zone, La Quinta Hotel and much more.

TRADE AREA DEMOGRAPHICS

YEAR: 2009	1 MILE	3 MILES	5 MILES
Population Estimate	1,847	13,314	39,993
Households Estimate	726	5,070	15,534
Average Household Size	2.53	2.61	2.57
Average Household Income Est.	\$54,188	\$65,635	\$69,158
Median Household Income Est.	\$40,136	\$53,011	\$55,664
Household Growth 1990-2000	27.70%	31.51%	44.37%

